



66 Greenhow Street, Walkley, Sheffield, S6 3TP

Saxton Mee

66 Greenhow Street

Walkley

Offers Around

£340,000

Situated on this very popular road, a most attractive and tastefully extended three bedroom detached family residence which has been sympathetically upgraded by the current owners and an internal inspection is strongly recommended to do full justice. The property is situated close to great amenities of Walkley, the Universities and Hospitals, and open countryside.

Ground floor comprising reception hall, bay windowed sitting room, superb large spacious dining kitchen with good range of units and range of built in appliances with patio doors opening through to garden room/conservatory with lovely open aspect. On the first floor; two double bedrooms and a good sized single bedroom plus bathroom with full suite and shower.

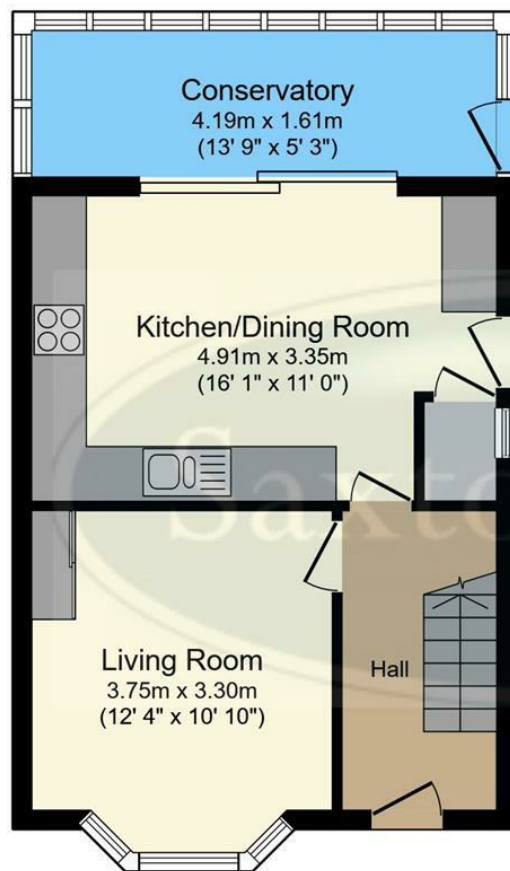
Outside; an attractive front garden area and wide driveway to the side with raised borders and garden shed. To the rear is an attractive landscaped courtyard garden area with raised beds and open aspect.



- Attractive Extended Three Bedroom Detached Residence
- Sympathetically Improved And Tastefully Decorated Internally
- Having Some Lovely Features
- Internal Inspection An Absolute Must
- Large Open Plan Living Kitchen
- Patio Doors Leading Through To Garden Room/Conservatory
- Bay Windowed Sitting Room
- Wide Driveway Providing Good Off Road Parking
- Easy To Maintain Landscaped Garden
- Well Placed For The Amenities Of Walkley And Convenient For The Universities And Hospitals

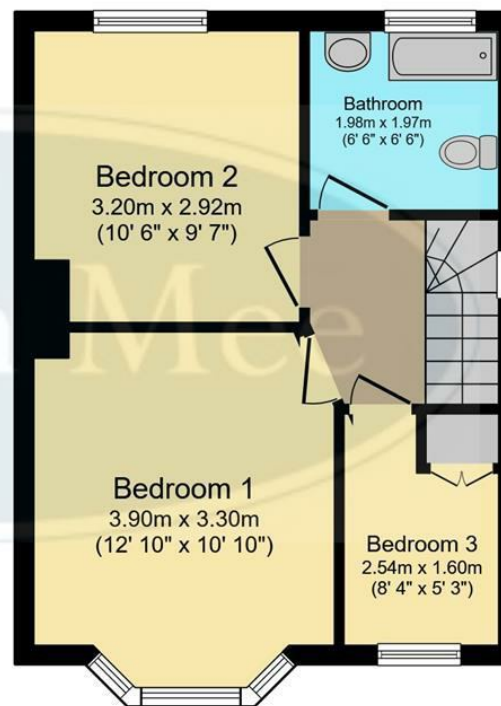






Ground Floor

Floor area 44.4 m² (478 sq.ft.)



First Floor

Floor area 35.1 m² (378 sq.ft.)

TOTAL: 79.5 m² (856 sq.ft.)

This floor plan is for illustrative purposes only. It is not drawn to scale. Any measurements, floor areas (including any total floor area), openings and orientations are approximate. No details are guaranteed, they cannot be relied upon for any purpose and do not form any part of any agreement. No liability is taken for any error, omission or misstatement. A party must rely upon its own inspection(s). Powered by www.Propertybox.io

While we endeavour to make our sales particulars fair, accurate and reliable, they are only a general guide to the property and, accordingly, if there is any point, which is of particular importance to you, please contact the relevant office. The Agents have not tested any apparatus, equipment, fittings or services and so cannot verify they are in working order. The buyer is advised to obtain verification. Please note all the measurement details are approximate and should not be relied upon as exact. All plans, floor plans and maps are for guidance purposes only and are not to scale. Under no circumstances should they be relied upon as exact or for use in planning carpets and other such fixtures, fittings or furnishings. YOUR HOME IS AT RISK IF YOU DO NOT KEEP UP REPAYMENTS ON A MORTGAGE OR OTHER LOAN SECURED ON IT. 'A Life Assurance policy may be requested.' 'Written Quotations of credit terms available on request.'

Banner Cross
T: 0114 268 3241
E: bannercross@saxtonmee.co.uk
www.saxtonmee.co.uk

Hathersage
T: 01433 650009
E: hathersage@saxtonmee.co.uk

Bakewell
T: 01629 815307
E: bakewell@saxtonmee.co.uk

Matlock
T: 01629 828250
E: matlock@saxtonmee.co.uk

